



Hanex[®] Solid Surfaces

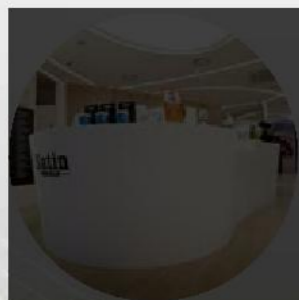
Design Flexibility·Durability·Beauty

Hanex® Solid Surfaces

Design Flexibility · Durability · Beauty

Contents

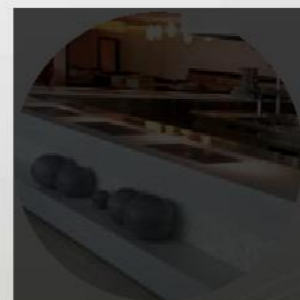
Introduction	04
Certification	05
Color Index	06
Sink Bowls	10
<i>Job Site Residential Project</i>	
Kitchen	12
Bathroom	15
<i>Commercial Project</i>	
Shopping mall	16
Restaurant	20
Office	22
MSDS (Material Safety Data Sheet)	24
Specifications / Certifications	26



Shopping Mall



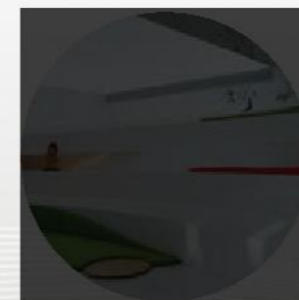
Office



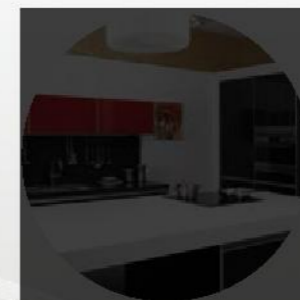
Restaurant



Hospital



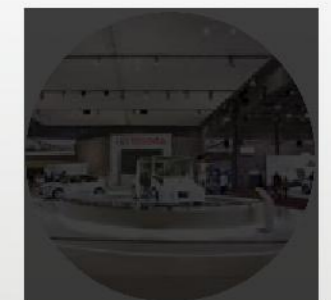
School



Kitchen



Bathroom



Showroom

One Inspirational surface

Hanex® solid surfaces can be fabricated and installed in almost any residential or commercial application with inconspicuous seams.

Rich colours and textures.
Superior function and form.

Discover the many unique benefits of Hanex®. The only limitation of Hanex® is your imagination.

- Easy to fabricate designs envisioned by designers or architects
- Highly durable
- Maintains its colour and shape
- Resistant to heat, mould, pollutants and bacteria
- Renewable, repairable & environmentally friendly
- Easy to care for & maintain - scratch & stain resistant
- Extensive colour range
- 10 Years limited warranty
- Endless design possibilities
- Hanex® achieves the highest for classification - en13501-1b



HANEX® products are non-porous and certified NSF51 for food preparation areas. Therefore, they can be applied in any application where sanitation is of utmost importance, such as kitchen worksurfaces, hospitals, playrooms or schools.



The unlimited design flexibility of HANEX® enables you to create a beautiful and durable aesthetic in any commercial setting, be it a hospital, bank, restaurant, hotel or office space. Commercial applications include : Office/hospitality and medical counters & worksurfaces, reception desks, bathroom worksurfaces and vanities, tabletops, food preparation areas, commercial fitouts including aesthetically seamless wall cladding, lift & foyer surrounds, lighting and more...

Hanex® Achieves The Following

Fire Certification EN13501-1b

This is the European Fire classification relating to all construction products, including products incorporated within building elements. Products are considered in relation to their end use application. HANEX® achieves EN13501-1b which is comparable to B5476 Class 0.

NSF51 Certification

This Standard is applicable to the materials and finishes used in the manufacture of food equipment (e.g., beverage dispenser, cutting board, work surfaces, etc).

Green guard Certification

Indoor Air Quality Certification ensures that products meet indoor air quality pollutant guide lines/standards.

Stain Resistance Report

HANEX® is an acrylic solid surface material product with a high level of alumina trihydrate content as the filler, an ingredient which provides superior resistance to stains and chemicals. However, exposure to harsh chemicals should be avoided. In case of surface contamination, quickly flush affected area with a domestic gritty cleaner and water. Sand if necessary, as a rule of thumb, surface damage may vary with the chemical strength and exposure time.

Scientific Certification Systems

These certificates relate to recycled chips in use in our material.

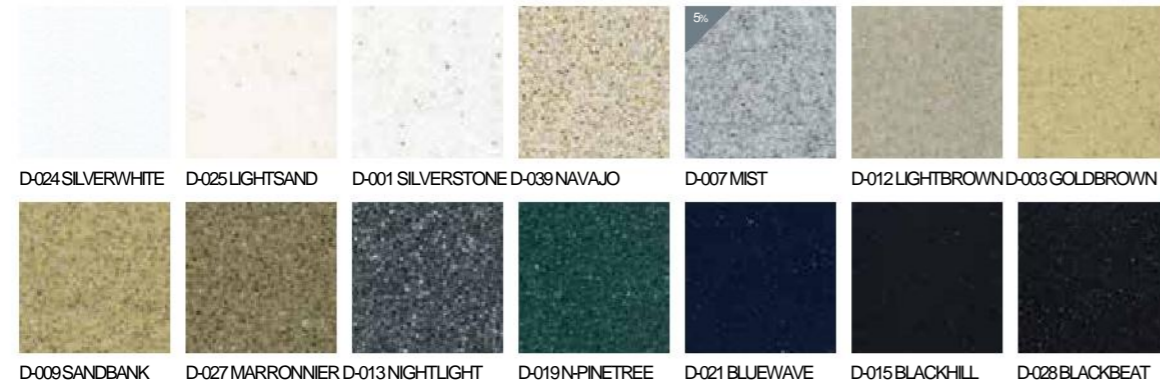
Certificates available at www.hanex-i.com

Hanex® Color Collection

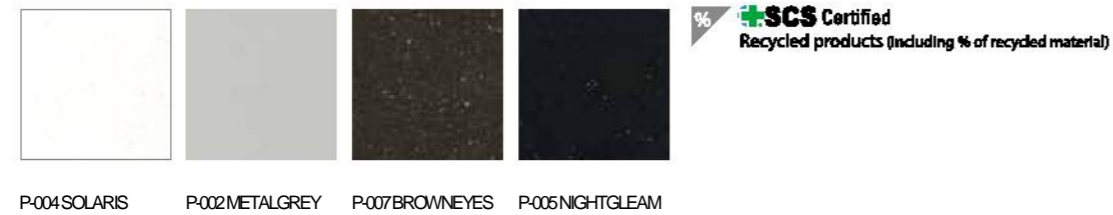
Solo



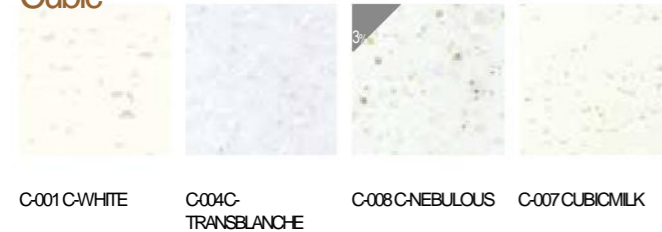
Duo



Pearl



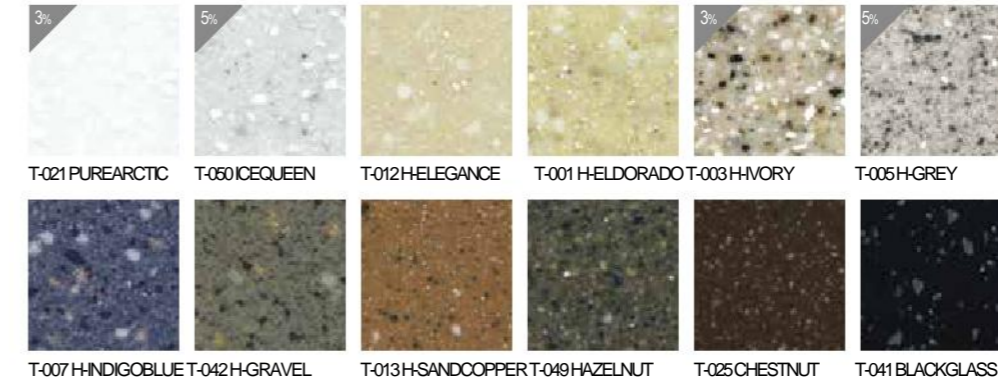
Cubic



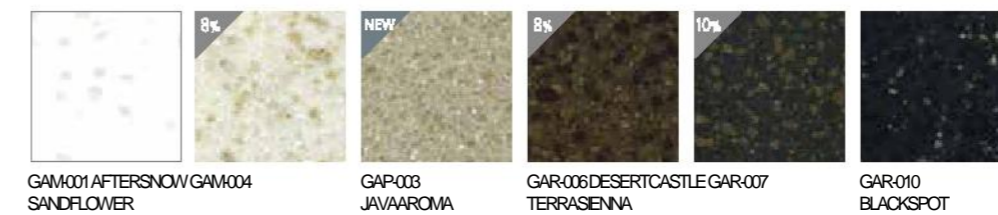
Magic



Trio



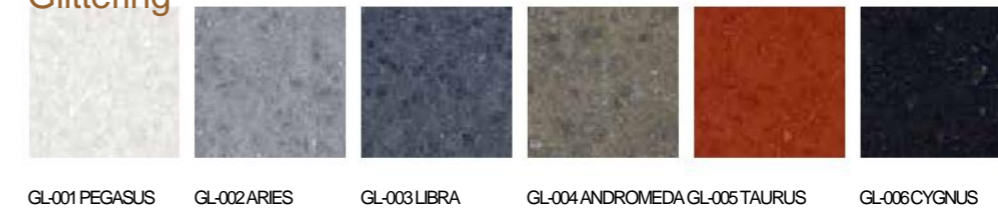
Galleria



Giant



Glittering

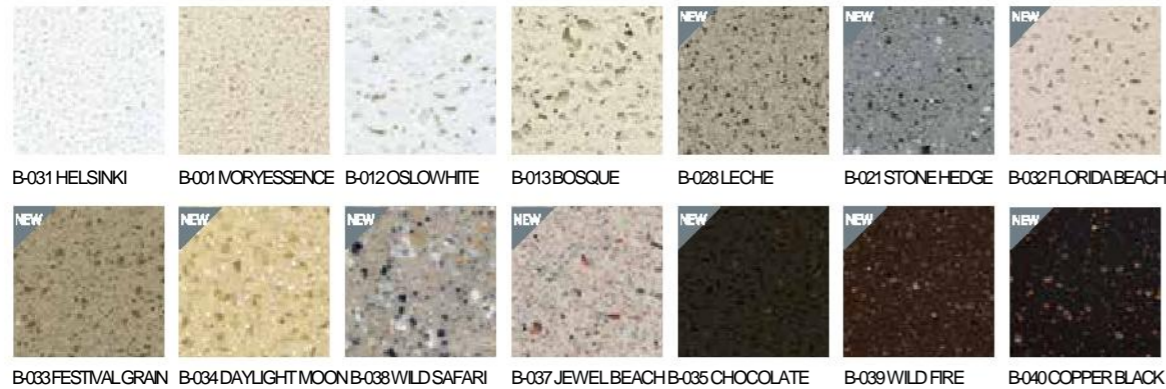


All dark décors are prone to show scratches, dust, haziness and ordinary wear and tear more easily than lighter textured décors. Therefore, these décors are not recommended for use in residential and commercial applications that will be subject to heavy use.

Hanex® Color Collection

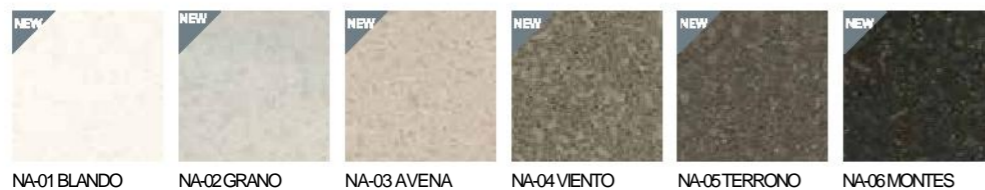
Brionne

Reflects the natural essence of solid stone.



Nativo Collection

The new and premium collection 'NATIVO' resembles distinguished and premium look of nature. The unique atypical chips and tone-on-tone colors in 'NATIVO' create the natural and wild look which solid surfaces never had before.



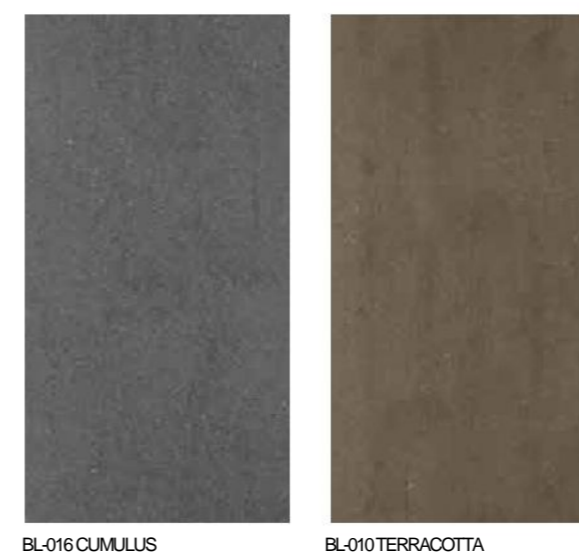
Therapy Collection

'THERAPY' is the eco-friendly collection which provides the organic and natural look. These products are manufactured with recycled resources so that you could heal the environment with this 'THERAPY' series.



Bellissimo

The luxurious premium Solid surface HANEX®. Bellissimo is innovative in its design flexibility, providing possibilities never imagined.

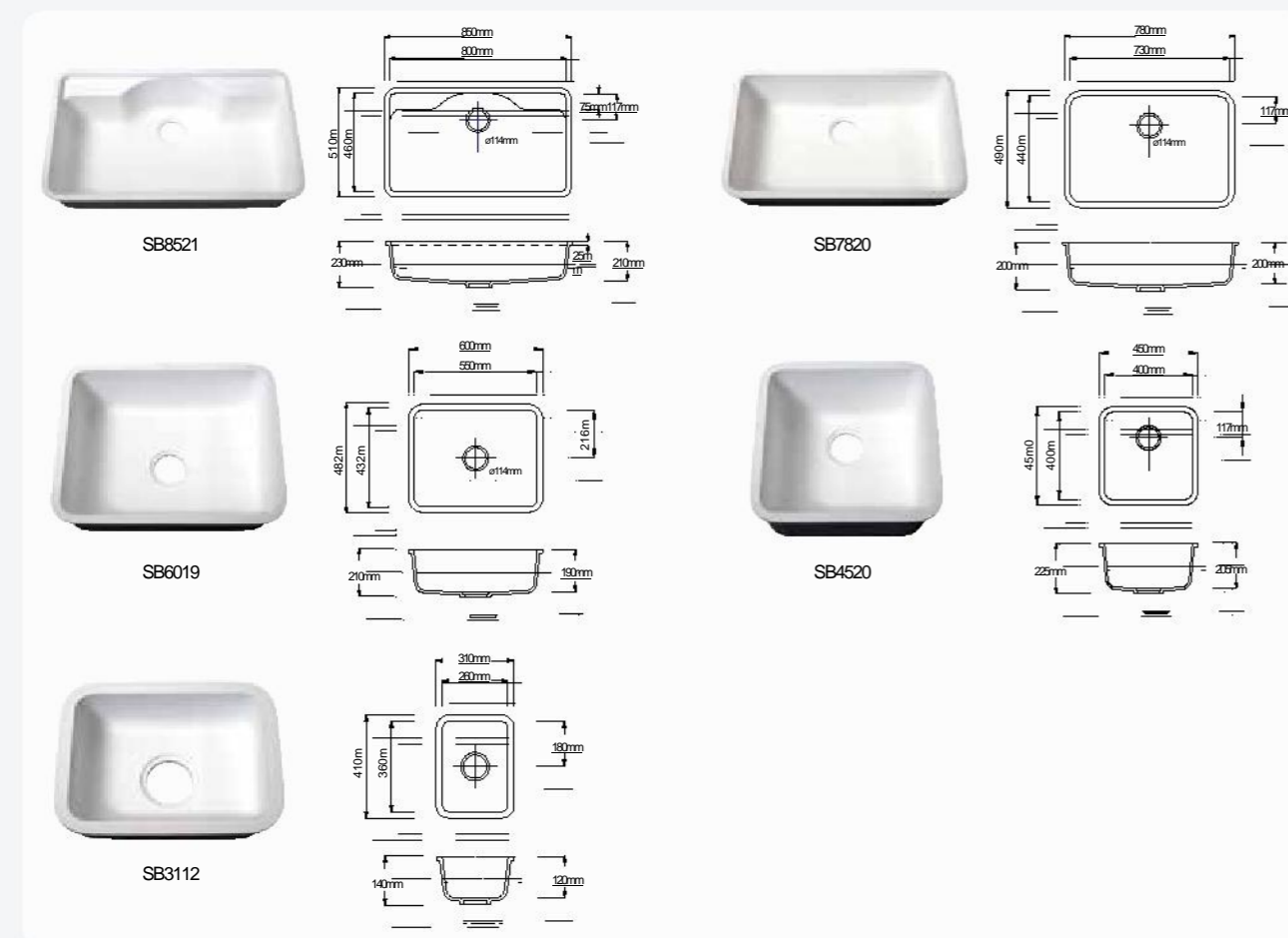


Note! The Bellissimo decors are veined and small samples may not show the veining effect. Ensure you are aware of the overall look of the Bellissimo product prior to purchase and fabrication of the heats. Please note that covered upstands highlight the vein through the product and edges should always be rebated on these decors.

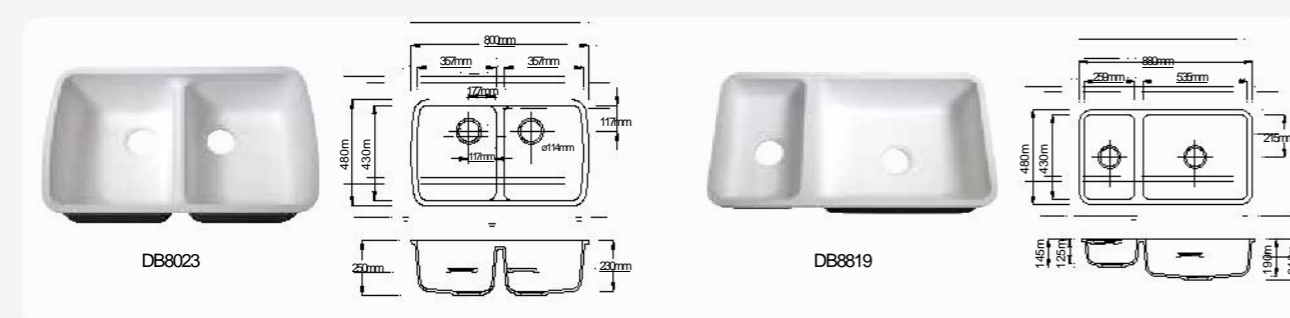
All dark décors are prone to show scratches, dust, haziness and ordinary wear and tear more easily than lighter textured décors. Therefore, these décors are not recommended for use in residential and commercial applications that will be subject to heavy use.

Hanex® Acrylic Sinks & Bowls

Single Sinks



Double Sinks



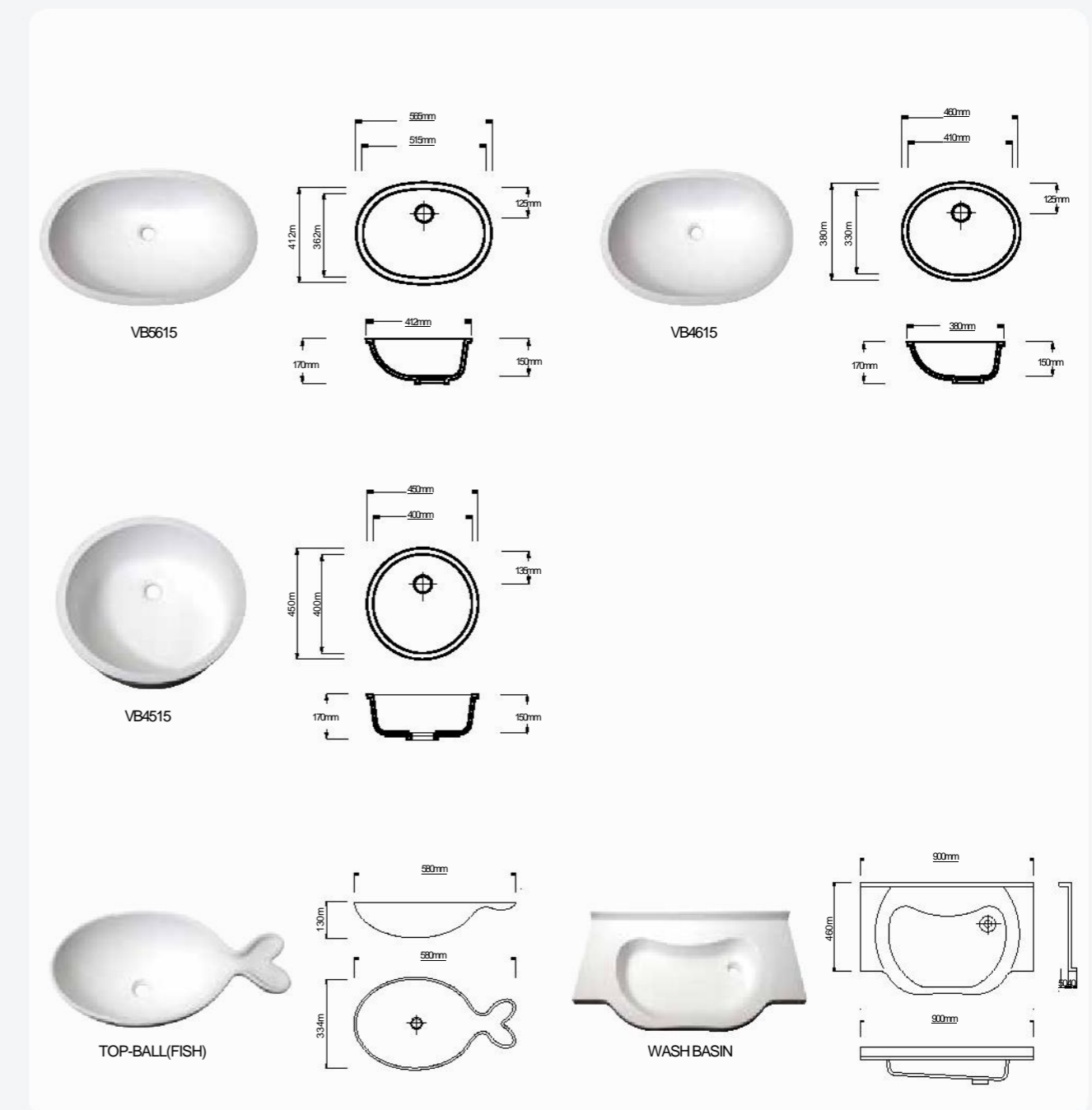
Colours available

S-008 N-WHITE & S-004 IVORY other colors upon request, please contact your local Hanex Distributor. All casted sinks are covered by 10 year manufacturers warranty.

Features

- 100% acrylic Sinks & Bowls
- Excellent quality and design
- Available to make the customized designs
- Good color matching with solid surface
- Available in even small quantity(HANEX model)

Bowls



Available in Solo category with matching solid surface or stainless steel base. All fabricated sinks are covered by 10 year manufacturers warranty. Delivery lead-times will apply as these sinks are manufactured to order.

Hanex® Job Site Residential Project

KITCHEN

1. BL-003 PIETRA PANNA



7. NA-04 VIENTO



8. NA-04 VIENTO 9. NATIVO SERIES



2. BL-003 PIETRA PANNA



3. BL-003 PIETRA PANNA



4. BL-002 CELADON



5. BL-002 CELADON

10. NATIVO SERIES



11. NA-06 MONTES
12. NA-06 MONTES



6. BL-002 CELADON

13. P-004 SOLARIS



1/2/3/4/5/6
Grace Group Showroom_Taiwan

7/8/9/10/11/12/13
Seohan Industry Showroom_Korea

Hanex® Job Site Residential Project

KITCHEN

1. C-001 CUBIC WHITE



2. GAM-001 AFTERSNOW



3. BL-002 CELADON



4. S-008 N-WHITE



5. S-008 N-WHITE



6. B-034 DAYLIGHT MOON

- 1_Hanwha Europe_Germany
- 2/7_Grace Group TEAM7 Showroom_Taiwan
- 3/4_Grace Group Showroom_Taiwan
- 5_Residence_Australia
- 6_Residence_Germany



7. GAM-001 AFTERSNOW

Hanex® Job Site Residential Project

BATHROOM

1. S-008 N-WHITE



2. S-008 N-WHITE



3. S-008 N-WHITE



4. C-001 CUBIC WHITE



- 1/2 _ Hanwha L&C Showroom_Korea
- 3 _ Residence_Australia
- 4 _ Minton Condominium_Singapore

Hanex[®] Job Site Commercial Project

SHOPPING MALL

1. S-008 N-WHITE



6. P-004 SOLARIS



7. S-008 N-WHITE / M-005 N-ORANGE / M-006 N-ORANGE / M-007 BLACK



8. BL-016 CUMULUS



6. Mui Ne Jewelry_Vietnam
7. Istanbul Exhibition_Turkey
8 / 9 VDL Cosmetic_Korea
10. Cine Royal_UAE

9. BL-016 CUMULUS

10. T-021 PURE ARCTIC



2. S-008 N-WHITE
008 N-WHITE

4. S-008 N-WHITE 3. S-008 N-WHITE 5. S-

1 _ Satin Hair Salon_Korea
2/3/4/5 _ Galleria Department Store_Korea

Hanex[®] Job Site Commercial Project

SHOPPING MALL

1. S-008 N-WHITE



3. S-008 N-WHITE



4. S-008 N-WHITE



6. S-008 N-WHITE



5. S-008 N-WHITE

2. S-008 N-WHITE



1_ Asos Shop_Germany
 2_ Nokia Flagship Store_Thailand
 3/4/5/6_ Coex Center_Korea

Hanex® Job Site Commercial Project

RESTAURANT

1. S-008 N-WHITE



3. S-008 N-WHITE

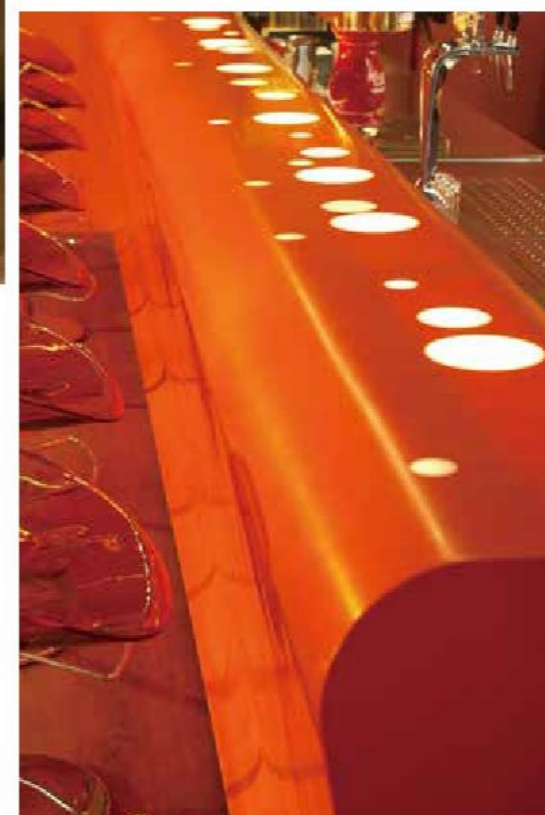


4. S-008 N-WHITE



- 1/2 _ Somerset Bangkok_Thailand
- 3/4 _ Kdwork_Germany
- 5 _ Alshafar_UAE
- 6 _ Bar Oranzovy_Czech Republic
- 7/8 _ Lotteria_Vietnam

2. S-008 N-WHITE



7. S-008 N-WHITE
8. S-008 N-WHITE

5. S-008 N-WHITE
6. S-008 N-WHITE

Hanex® Job Site Commercial Project OFFICE



1. D-015 BLACKHILL

5. P-004 SOLARIS

6. S-008 N-WHITE

7. S-008 N-WHITE

9. C-004 CUBIC MILK

8. S-008 N-WHITE

2. S-008 N-WHITE

3. C-001 CUBIC WHITE
4. S-008 N-WHITE

- 1/2/4 _ Hanwha Building_Korea
- 3 _ Greencross_korea
- 5 _ ACB Bank_Vietnam
- 6/7_ Gangnam Public
Convalescent Hospital_Korea
- 8 _ Zow Exhibition_Germany
- 9 _ Slavia_Czech Republic
- 10 _ Hanwha L&C Showroom Korea
- 11 _ HDR Design Kingston_USA

10. T-021 PURE ARCTIC

11. C-001 CUBIC WHITE

Hanex[®] Material Safety Data Sheet

Chemical Product And Company Identification

Material Identification

HANEX (HANEX is a registered trademark of HANWHA L&C CORP.)

Company Identification Manufacturer

HANWHA LIVING & CREATIVE CORP.

15F HANWHA Bldg. 86 Cheonggyecheon-ro, Jung-gu, Seoul 100-797, Republic of Korea

Contact Details For Information

HANWHA LIVING & CREATIVE CORP.

15F HANWHA Bldg. 86 Cheonggyecheon-ro, Jung-gu, Seoul 100-797, Republic of Korea

Ph: +82 2 729 1591 Fax: +82 2 729 1447

Composition And Information On Ingredients

Component	CA	%
Polymethylmethacrylate	S	>30
Alumina Trihydrate	8011-14-7	<70
Methylmethacrylate (Degradation Product)	21645-51-2	<1
Heated above 300 dCe,g " HANEX" can release	80-62-6	

Fire-Fighting Measures And Explosion Hazard

Flammable Properties

"HANEX" can be combusted only with difficulty.

Hazardous gases/vapor produced in fire are carbon monoxide, methyl methacrylate, aldehydes

Extinguishing Media

Water, Dry chemical, CO₂

Fire Fighting Instructions

Keep personnel removed and upwind of fire.

Wear self-contained breathing apparatus.

Accidental Release Measures

Safeguard (Personnel)

NOTE : Review FIRE FIGHTING MEASURES and HANDLING (PERSONNEL) sections before proceeding with clean-up.

Use appropriate PERSONAL PROTECTIVE during clean up.

Spill Clean Up

Recover undamaged and minimally contaminated material for reuse and reclamation.

Handling And Storage

Handling (Personnel)

Avoid breathing dust.

Avoid breathing fumes generated during sawing, routing or drilling.

Handling (Physical Aspects)

Avoid dust generation.

Storage

Store in a cool place

Exposure Controls And Personal Protection

Engineering Controls (Ventilation)

Use ventilation that is adequate to keep employee exposure to air borne concentration below exposure limits.

Personal Protection

Protective equipment: EYE/FACE PROTECTION

Wear safety glasses during operations such as sawing, sanding, drilling or routing.

Toxicological Information

Skin / Eye Irritant Polymethylmethacrylate

The compound is not a skin or eye irritant and is not a skin sensitizer in animals. Single or repeated ingestion produced mild degenerative changes of liver and kidney.

Methyl Methacrylate

The compound is a skin irritant, is a moderate eye irritant, and is a skin sensitizer in animals.

Alumina Trihydrateyleate

The compound is untested for skin and eye irritant, and is untested for animal sensitization.

Acute Toxicity (LC50)

POLYMETHYL METHACRYLATE

>2MG/1, 4hr LC50(Inhalation/Rat)

METHYL METHACRYLATE

7093PPM/4hr LC50(Inhalation/Rat)

Acute Toxicity (LC50)

POLYMETHYL METHACRYLATE

>2000mg/kg, 4hr LD50(Oral/Cat)

METHYL METHACRYLATE

7900PPM/4hr LD50(Oral/Cat)

Ecological Information

BIODEGRADATION

No information is available

BIOACCUMULTION

No information is available

AQUATIC TOXICITY

No information is available

Disposal Considerations

Dispose in accordance with federal, state and local regulation.

The owner of the material is responsible for proper waste disposal.

Other Information

The data in this Material Safety Data Sheet relates only to the specific material designated herein and does not relate to use in combination with any other material or in any process.

Responsibility for MSDS : "HANEX" products

URANUS TRADING EST

Tel.971 (2) 678-5590 (Head Office)

Tel.971 (2) 672-2279 (Show Room)

